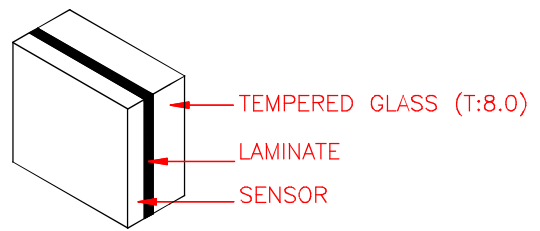
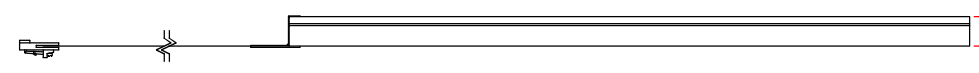
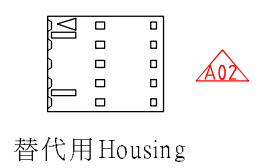
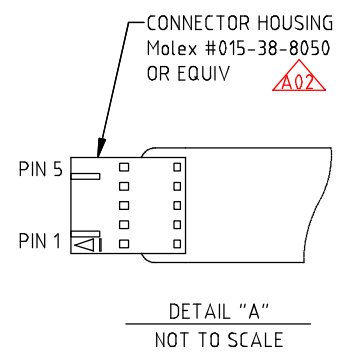
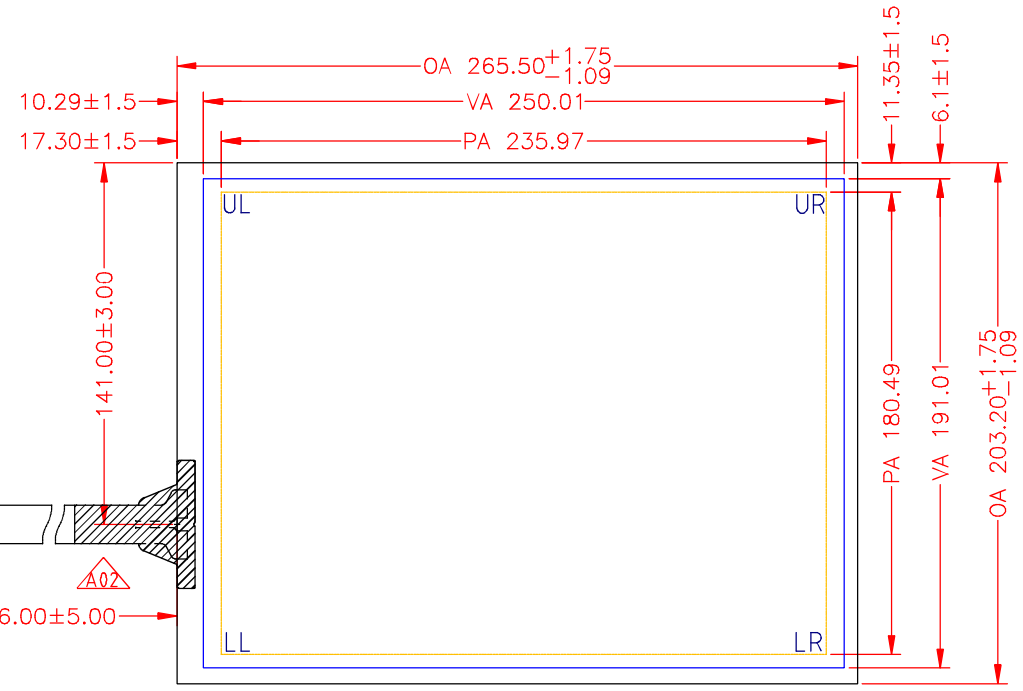


OA DIAGONAL : 334.34 [13.16"] (REF)  
 VA DIAGONAL : 314.63 [12.40"] (REF)  
 PA DIAGONAL : 297.08 [11.70"] (REF)



LAY UP



PIN OUT	
5	UR
4	UL
3	NC
2	LL
1	LR

NOTES :  
 1. Tail type : FPC  
 2. A02: Eliminate pin 3 and update Mylar tape shape, etc.

DIMENSIONS		MM		Dano 達諾光電股份有限公司	
TOLERANCES UNLESS OTHERWISE SPECIFIED		TITLE		NOTICE OF PROPRIETARY RIGHTS	
.X	±	Capacitive Touch Sensor		The document is proprietary property of Dano Tech Corp. Ltd. and may not be reproduced or distributed without DanoTech authorization.	
.XX	±0.76	265.50x 203.20 x 11.40			
.XXX	±0.38				
ANGLES	±1°				
THIRD ANGLE PROJECTION		P/N		DRAWN BY	
		F1-1246GAPA-NL		YC	
DO NOT SCALE DRAWING		REV.		SHEET	
SCALE		A-02		1 of 1	
1 : 1				DRAWN DATE	
				2014-05-16	

A-02	Eliminate pin 3 and update Mylar tape shape, etc	2014-05-16	YC
A-01	INITIAL RELEASE	2012-03-23	YC
REV	CHANGE NOTICE	DATE	DRW